

**NEW**  
Ethernet

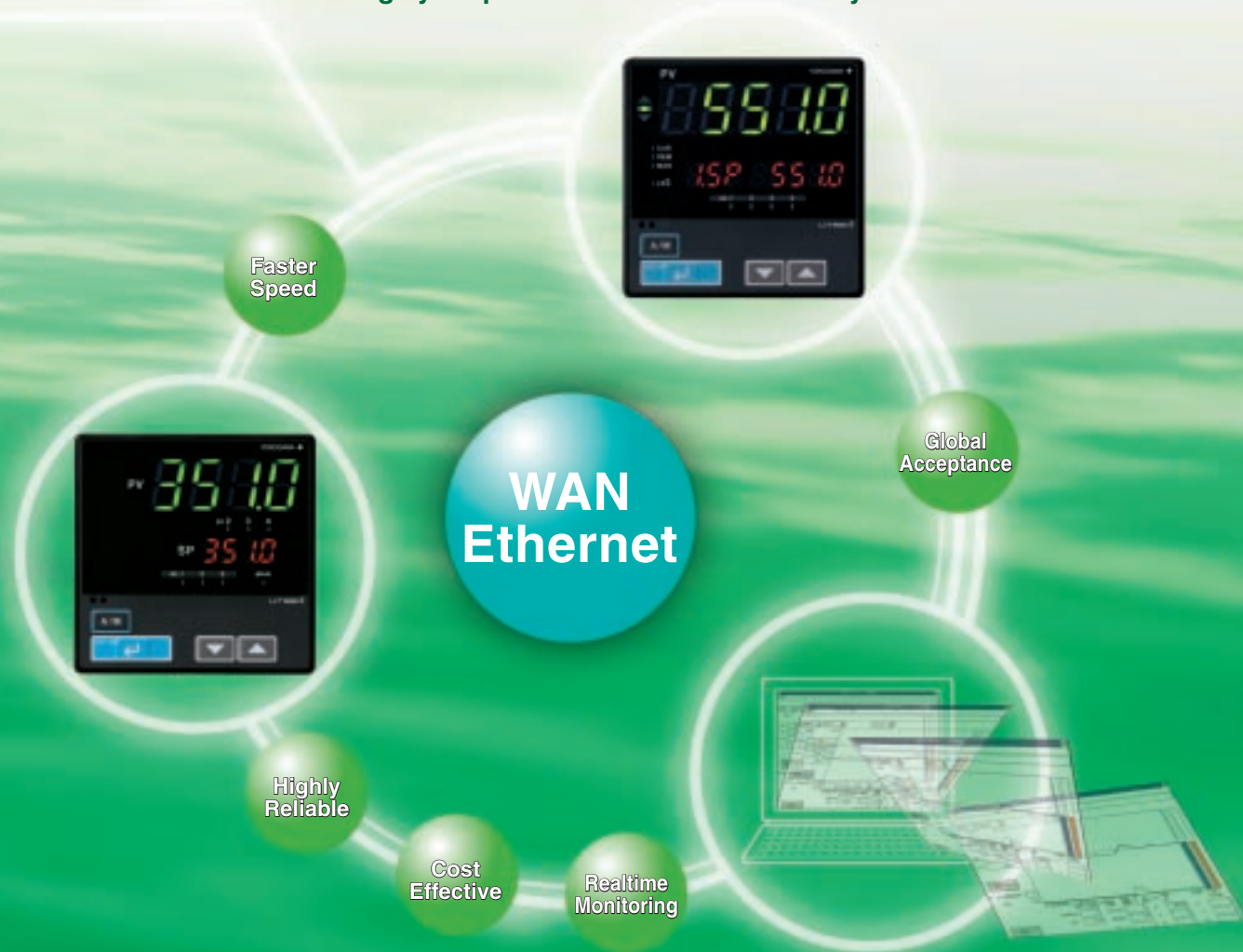
# Just Plug and GO! Network Solutions

DIGITAL INDICATING CONTROLLER WITH INDUSTRIAL ETHERNET

## UT551/351



The Yokogawa is proud to be one of the first global single loop controller manufacturers to introduce, in its flagship single loop controller line, an Industrial Ethernet version. This feature, Modbus TCP/IP, will allow the controller to connect to the Internet or any other Ethernet network and have the ability to exchange data with the computers or devices on that network. This virtually gives you the ability to monitor and manage your process and its data from anywhere in the world!



# UT551/UT351 can communicate via Ethernet with a variety of industrial control devices to be integrated into the same application.

## Ethernet Communication

Ethernet is an inexpensive, mature, highly reliable, and proven system. Today, corporations that manufacture and maintain production lines around the globe and need the ability to perform remote maintenance. The Ethernet UT551/UT351 controllers make remote maintenance simple and cost effective. Because engineers can remotely monitor controller's status in other countries from headquarters and reduce travel time and expense. Ethernet adds new dimensions to the process. One is simple connectivity to the UT551/UT351 controller. The other is the ability to view, configure and troubleshoot the UT551/UT351 controllers remotely.

### UT551/UT351 Ethernet offers future expandability!

- UT551/UT351 Gateway Function allows control devices with RS485 Modbus Protocol to communicate via Ethernet.
- Ethernet (10 Base-T) guarantees greater support for future technical advances compared with other proprietary control networks, thus increasing the flexibility of your system.

### UT551/UT351 Ethernet is based on an open standard!

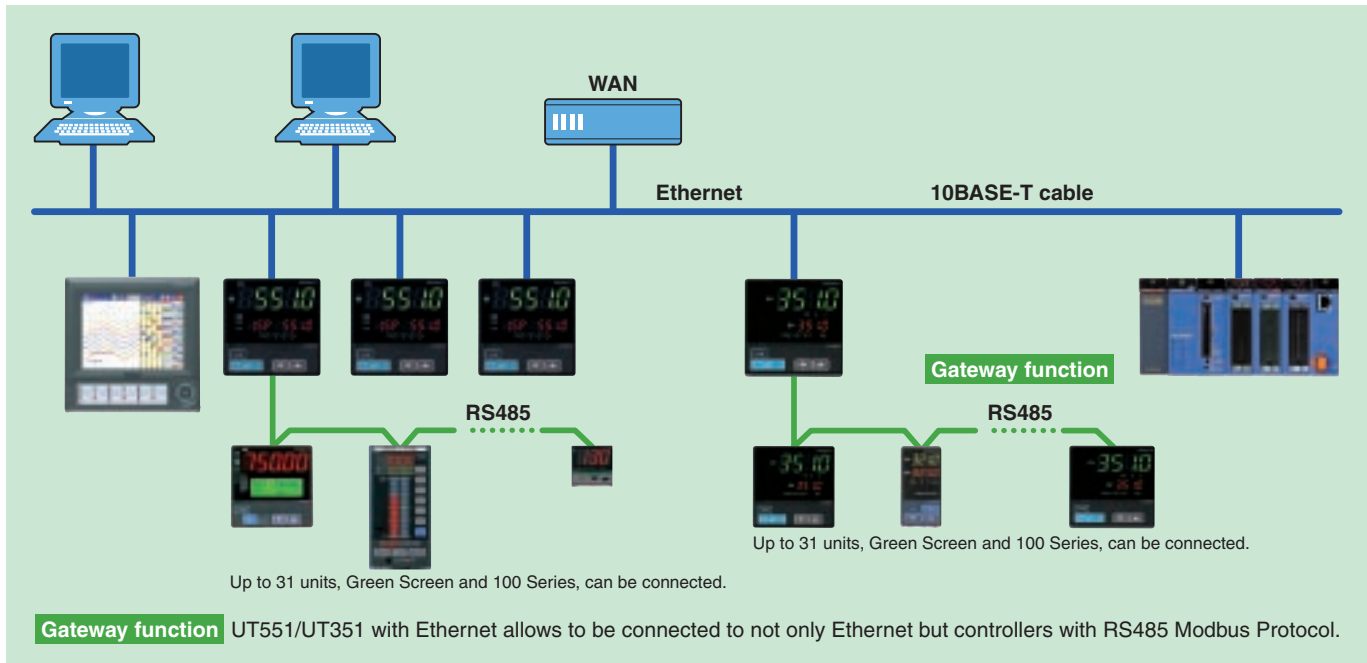
- YOKOGAWA standard parameter setting tool, Light Loader software, allows parameter setting and process tuning via Ethernet.
- Many types of devices can be easily connected to one other by just plugging them into the same network.
- More and more industrial software vendors are developing their applications to connect to products with Industrial Ethernet.

### UT551/UT351 Ethernet is already commonplace in office environments!

- An industrial control network gives users a head start over the competition, since users do not need to spend a lot of time learning new application programs.
- Training costs can be lowered, and development time can be shortened, since system developers are already familiar with Ethernet.

### UT551/UT351 Ethernet allows smooth and speedy installation!

- By choosing Industrial Ethernet, you ensure a smooth and speedy installation; you guarantee that new and existing software applications will continue to work and that your infrastructure will be ready for the future. It sounds like savings, and a smart decision.



Digital Indicating Controller  
**UT551**

Digital Indicating Controller  
**UT351**

#### Communication Specifications

Item	10BASE-T
Access Control	CSMA/CD
Transfer Rate	10Mbps
Max. Segment Length	100m <sup>Note1</sup>
Max. Connecting Configuration	Cascade Max. 4 level <sup>Note2</sup>

Note1: The length between Hub and Module. Note2: The number of cascade communications per Hub.

Model	Suffix Code	Description
UT551	- X X	Digital Indicating Controller
Type	0	Standard type
	1	Position proportional type
Optional function	A	With Ethernet communication
	B	With Ethernet communication, auxiliary analog (remote) input
	C	With Ethernet communication, 6 additional digital inputs, 4 additional digital outputs
	D	With Ethernet communication, auxiliary analog (remote) input, 6 additional digital inputs, 4 additional digital outputs

Model	Suffix Code	Description
UT351	- X X	Digital Indicating Controller
Type	0	Standard type
	2	Heating / Cooling type
Optional function	A	With Ethernet communication

Universal Input / Output

TC

RTD

mV  
DCV

4 to 20mA current

Voltage pulse

Relay control

Motor operated valve

Universal Input

Universal Output

Reliable Control Algorithm

Super

**Super Control function suppresses overshoot.**  
The field-proven **Super** function utilizes built-in operator experience and fuzzy theory to deliver fine control and overshoot suppression.

Super 2

**Control function suppresses hunting.**  
The new **Super 2** function utilizes built-in operator experience and modern control theory to deliver fine control and suppress hunting.

One-touch Controller Function for UT551

Single-loop control

Loop control with PV auto selector

Loop control with PV switching

Cascade control

Loop control for backup

Loop control with PV-hold function

Active Color PV Display

See the status of your process conditions **INSTANTLY!**

Active color

Normal

Alarm

The color of the display automatically changes from GREEN (normal) to RED (alarm).

ALARM STATUS

Active color display changes from GREEN (normal) to RED (alarm)

DEVIATION STATUS

Color changes based on a PV deviation from SP

USER-DEFINED COLOR

Choose between GREEN or RED display for constant readings

## Light Loader - Extremely Simple Configuration and Tuning via Ethernet

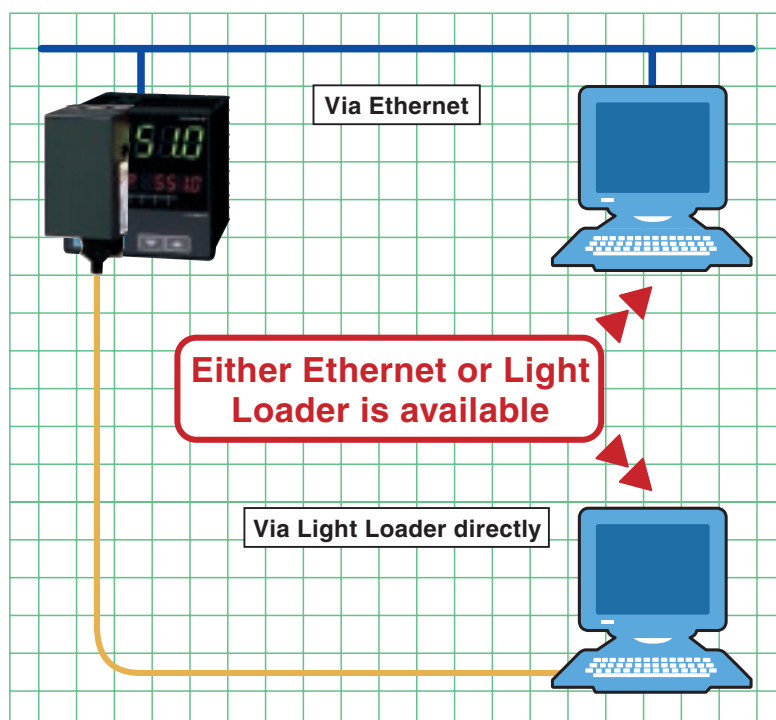
Controller configuration parameters can easily be set via Ethernet. Controller model type, Controller mode (single-loop control, cascade control, loop control with PV switching, etc.), Universal input/output functions, Setup parameters, Program parameters, and others.

LL100 English version.

(OS : Windows98, 2000, and XP, Windows NT4.0)\*

General Specification sheet No. : GS05G01B12-01E

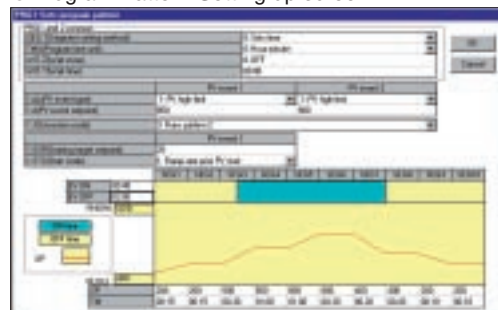
\*Windows98, 2000, and XP, Windows NT4.0 are registered by Microsoft of U.S.A.



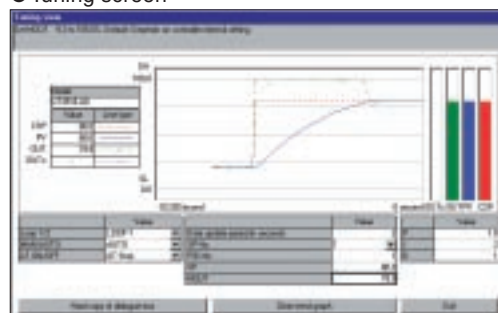
●Parameter Menu screen



●Program Pattern Setting up screen



●Tuning screen



**Your current controllers with RS485 can be connected to an Ethernet network using the New VJET Ethernet / RS485 converter. Your Green Series can be hooked up to Ethernet immediately.**

Green Series, UT100 series and power monitors are available for VJET.

For details please see General Specification GS77J01E11-01



Note; Ethernet is the trademark of XEROX Corporation. Please prepare Ethernet cable individually.

**YOKOGAWA** ◆

YOKOGAWA ELECTRIC CORPORATION

Network Solutions Business Div./Phone: (81)-422-52-7179, Fax: (81)-422-52-6793

E-mail: tm@csv.yokogawa.co.jp

YOKOGAWA CORPORATION OF AMERICA

YOKOGAWA EUROPE B.V.

YOKOGAWA ENGINEERING ASIA PTE. LTD.

Phone: (1)-770-253-7000, Fax: (1)-770-251-2088

Phone: (31)-33-4641806, Fax: (31)-33-4641807

Phone: (65)-62419933, Fax: (65)-62412606

Subject to change without notice.

[Ed : 01/b] Copyright ©2004

Printed in Japan, 409(KP)